



Alco Wall Case Study

Park Plaza
Westminster Bridge
London

alcowall
acoustic movable wall systems

About Us ▼

Alco Walls have been designing, manufacturing and installing movable walls in the U.K. and throughout the world for over 30 years. Our products are installed in many of the world's most prestigious buildings, from top sporting stadia and commercial institutions to schools and leading hotel chains. Common to every installation is our commitment to the highest standard of design, build, quality and service.

Our movable wall panels are manufactured at our own factory in the Midlands.

Park Plaza Westminster Bridge is London's largest hotel to open in a generation, situated on the vibrant South Bank of the River Thames.

The hotel has a unique style and this has been reflected in the finishes to the movable walls.



Westminster Ballroom ▼

Total number of walls = 6

Total number of panels = 84

Total amount of track = 80 metres

Total number of layouts = 11

Panel height = 5.3 metres

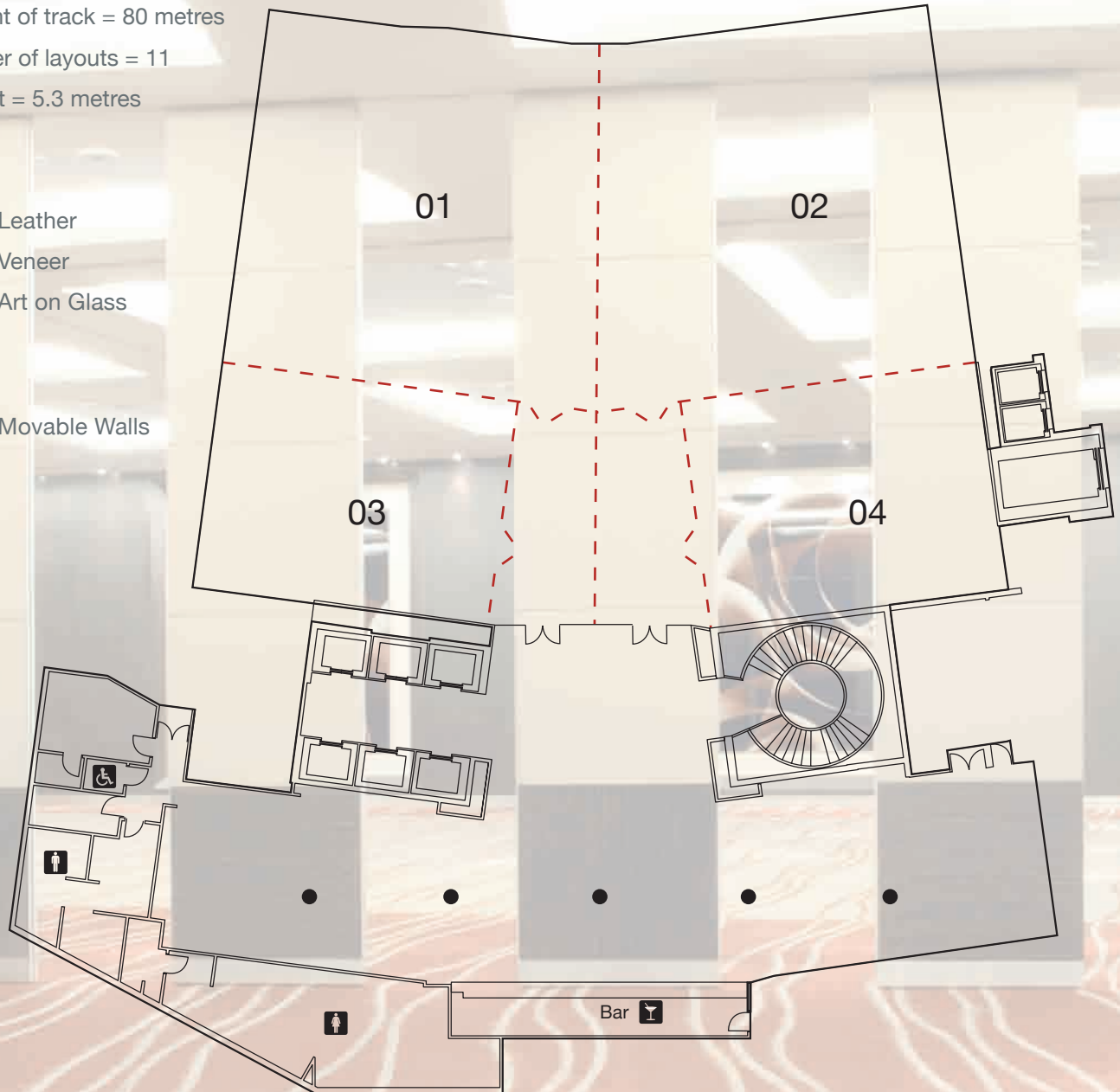
Finishes = Leather

Veneer

Art on Glass

Key:

- - - = Movable Walls





Space

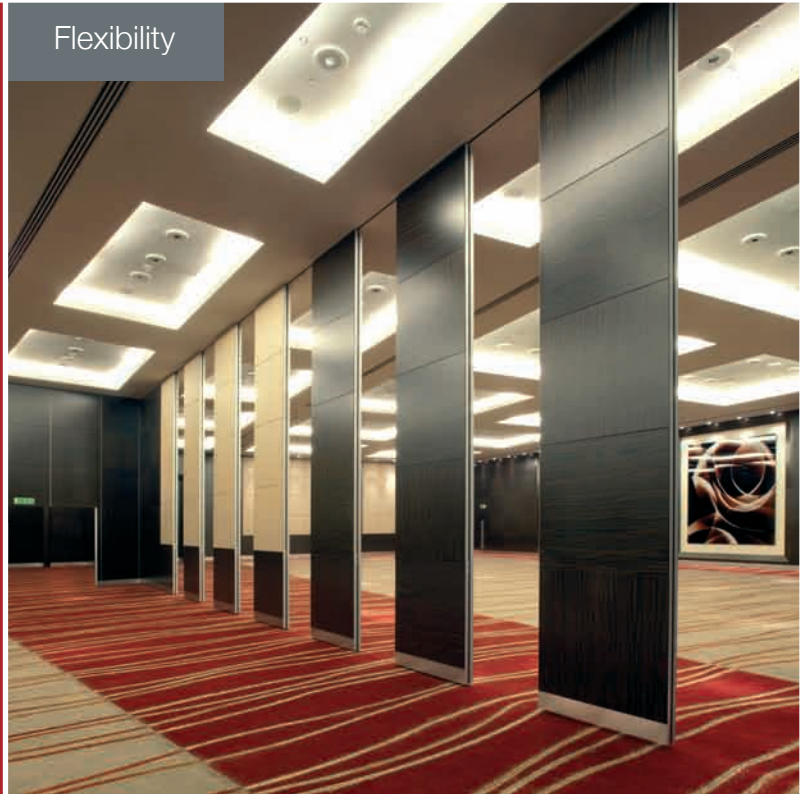
The Park Plaza Westminster Bridge is the latest London Hotel, following the successful completion of Park Plaza Victoria and Park Plaza River Bank.

Alco Walls have recently completed projects for Park Plaza in Cardiff and Leeds.

Alco Walls installed 36 NW100S 55dB Movable Walls.

The main Westminster Ballroom can be subdivided into 2, 4 or 6 rooms or opened up to create an area able to accommodate up to 1,400 people.

Flexibility



Plaza Suites Lower Ground Floor

Total number of walls = 25

Total number of panels = 181

Total amount of track = 204 metres

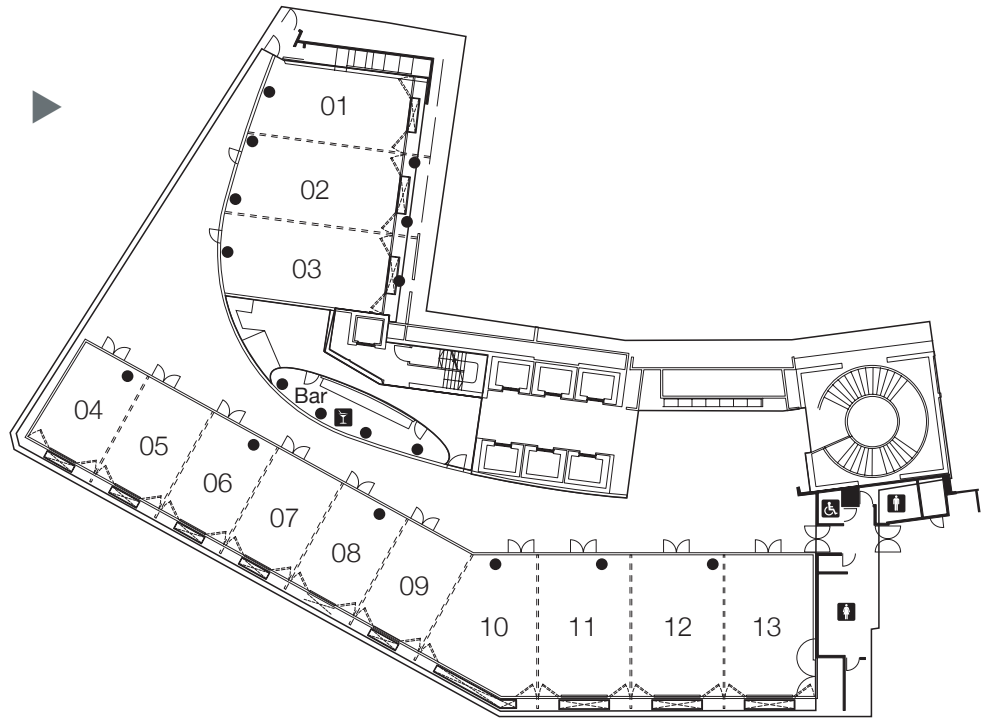
Panel height = 3.2 metres

Multiple layout options, giving maximum flexibility

Curved wall faceted panels and segmented track

Finishes = Veneer

Art on Glass



Bespoke





Spectacular

Park Suites and City Rooms

Total number of walls = 5

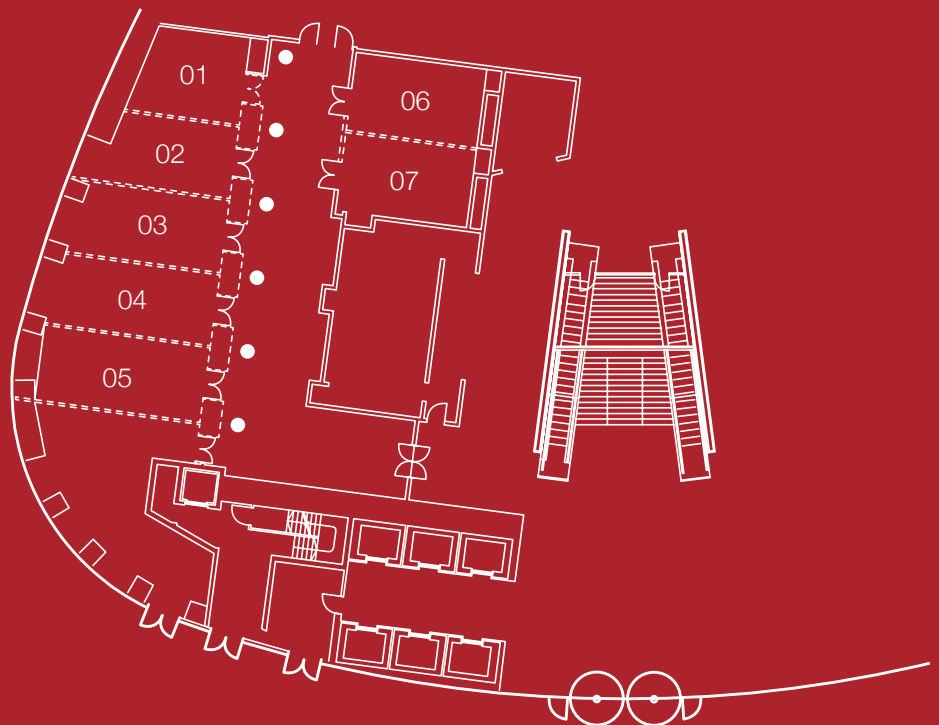
Total number of panels = 45

Total amount of track = 44 metres

Multiple layout options, giving
maximum flexibility

Panel height = 3 metres

Finishes = Leather
Veneer



Transformed . . .

36 movable walls

up to 30 meeting rooms

2,700m² of flexible space

London's largest hotel to open in a generation



Alco Wall Systems Ltd

Accordial House
35 Watford Metro Centre
Tolpits Lane
Watford
WD18 9XN
United Kingdom

Telephone: 01923 246600

Fax: 01923 206748

www.alcosystems.co.uk